

4A-9 Brake Control System and Diagnosis:

Front Brake Hose Removal and Installation

BENE31J14106009

Refer to "Front Brake Hose Routing Diagram" (Page 4A-1).

Removal

- 1) Drain brake fluid. (Page 4A-7)
- 2) Remove the air cleaner box. (Page 1D-5)
- 3) Remove the front brake hoses.

Installation

- 1) Install the front brake hoses.
- 2) Install the air cleaner box. (Page 1D-5)
- 3) Bleed air from the front brake system. (Page 4A-6)

Rear Brake Hose Removal and Installation

BENE31J14106010

Refer to "Rear Brake Hose Routing Diagram" (Page 4A-3).

Removal

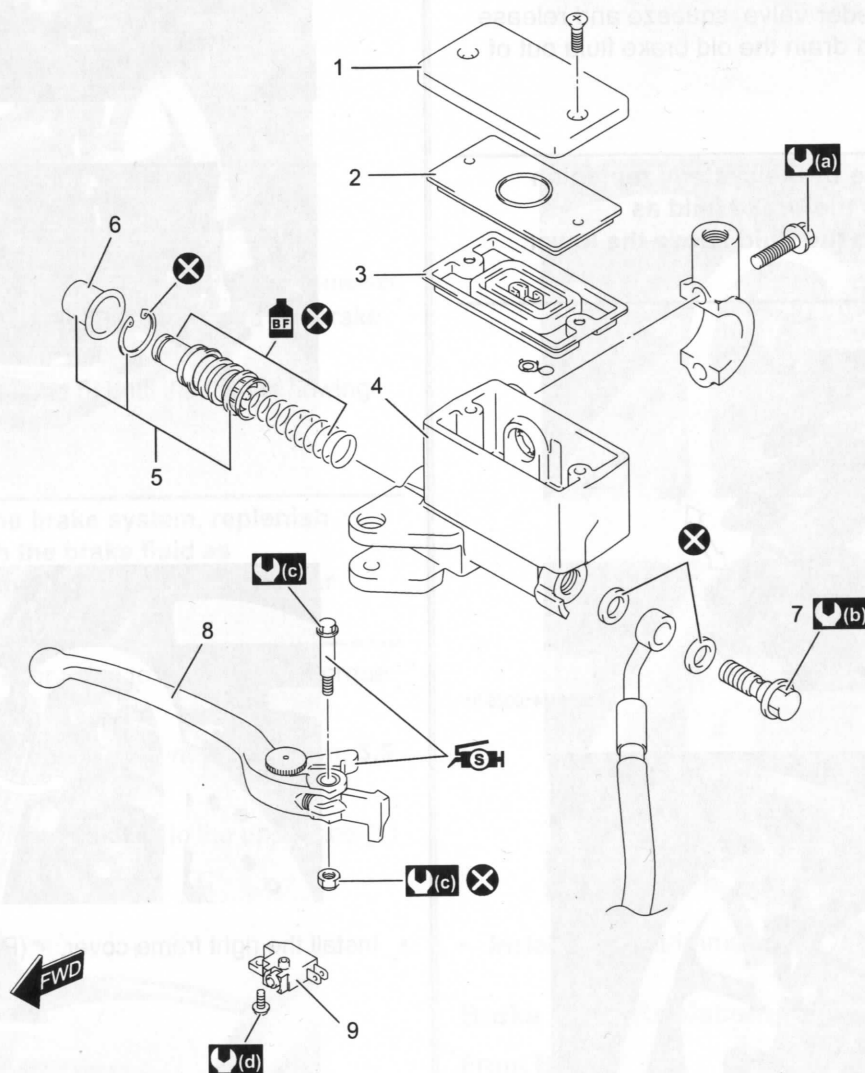
- 1) Remove the right frame cover. (Page 9D-11)
- 2) Drain brake fluid. (Page 4A-7)
- 3) Remove the rear brake hoses.

Installation

- 1) Install the rear brake hose.
- 2) Bleed air from the rear brake system. (Page 4A-6)
- 3) Install the right frame cover. (Page 9D-11)

Front Brake Master Cylinder Assembly / Brake Lever Components

BENE31J14106011



IE31J1410062-01

1. Reservoir cap	5. Piston/Cup set	9. Brake light switch	(d) : 1.2 N·m (0.12 kgf·m, 1.0 lbf·ft)
2. Plate	6. Dust boot	(a) : 10 N·m (1.0 kgf·m, 7.5 lbf·ft)	SH : Apply silicone grease.
3. Diaphragm	7. Brake hose union bolt	(b) : 23 N·m (2.3 kgf·m, 17.0 lbf·ft)	BF : Apply brake fluid.
4. Master cylinder	8. Brake lever	(c) : 6 N·m (0.6 kgf·m, 4.5 lbf·ft)	X : Do not reuse.